

**40**  
FUNNY &  
CUTE  
ANIMALS!



**400**

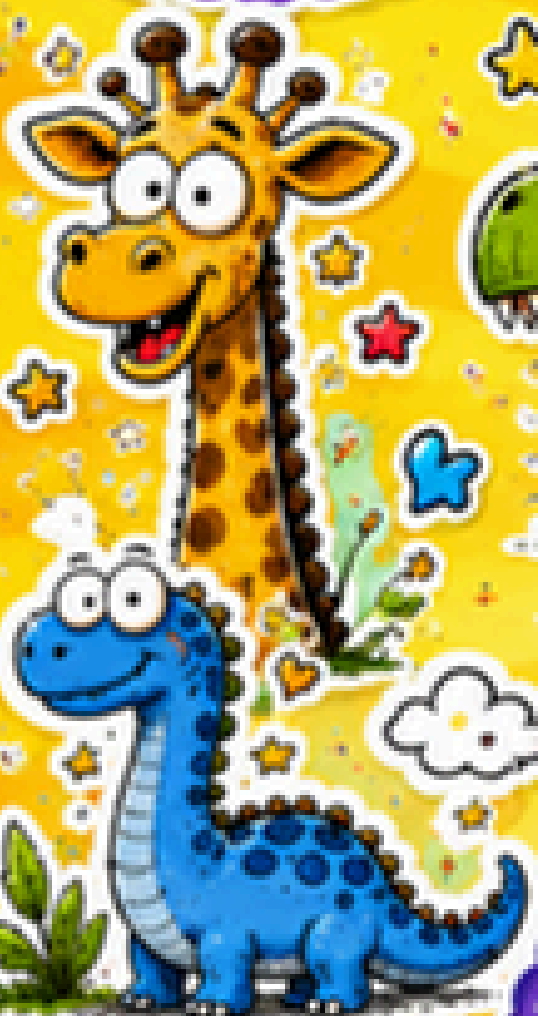


★ PERFECT FOR  
★ KIDS, TEACHERS  
& CREATIVE  
★ PROJECTS! ★

**FUNNY**  
**ANIMALS**

★ **STICKERS** ★

**DOWNLOAD**  
**FREE!**



  
**DOWNLOAD**  
**FREE!**



 **DOWNLOAD**  
**IT NOW!**



**CUTE, FUN**  
**AND FULL OF**  
**PERSONALITY!**



**FUNNY**



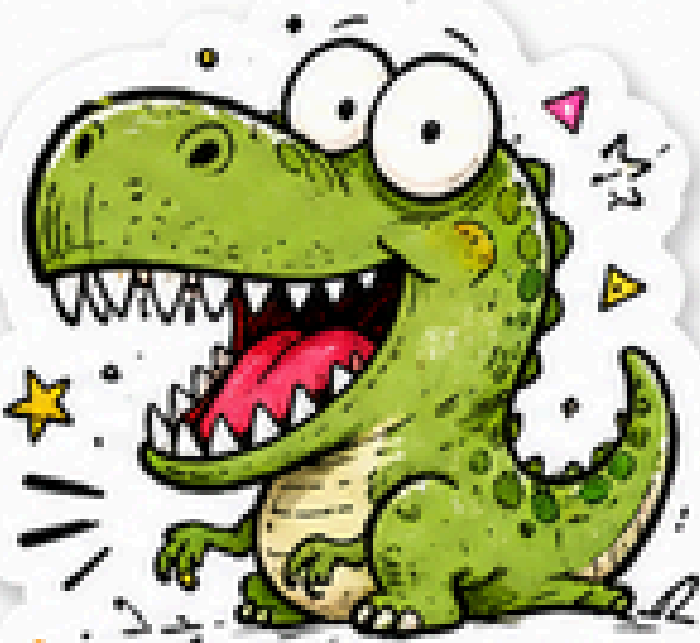
**COLORFUL**



**UNIQUE**



**ADORABLE**



T. REX HAD  
**TINY** ARMS!



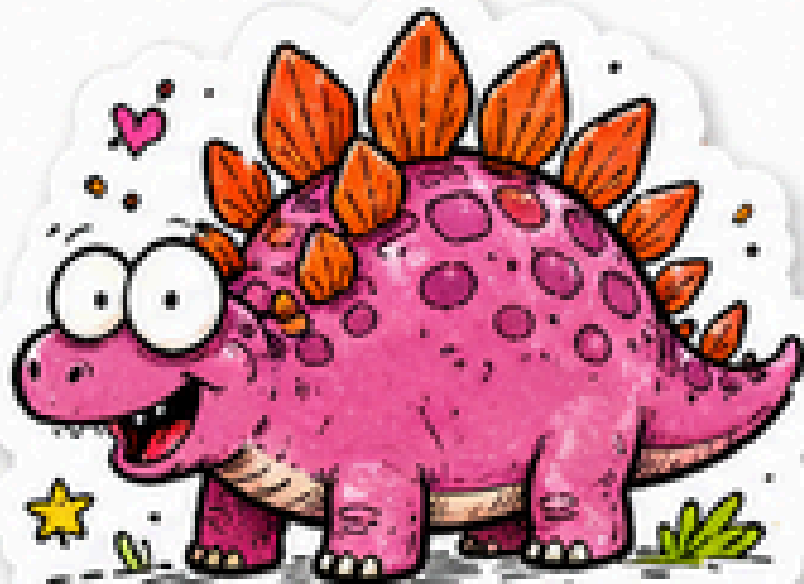
SAUROPODS HAD  
VERY **LONG** NECKS.



TRICERATOPS HAD  
**THREE** HORNS.



PTEROSAURS  
COULD **FLY**.



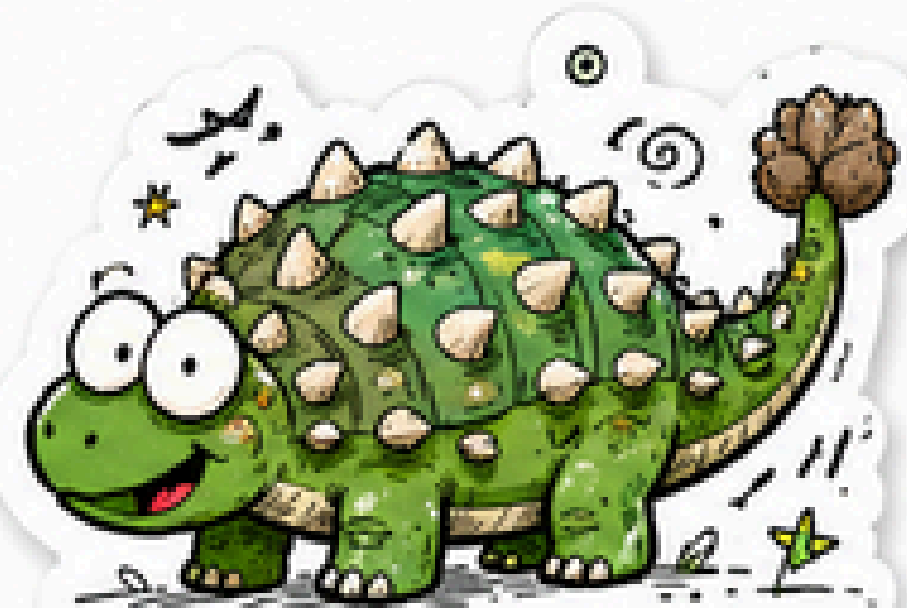
STEGOSAURUS HAD  
BONY **PLATES**.



VELOCIRAPTORS  
WERE VERY **FAST**.



DINOSAURS HATCHED  
FROM **EGGS**.



ANKYLOSAURUS HAD  
**ARMOR** TO PROTECT.





TIGERS ARE THE  
**LARGEST** WILD CATS.



TIGERS ARE  
**GREAT** HIDERS.



TIGERS HAVE  
**STRIPES**, NOT SPOTS.



TIGERS ARE  
**GOOD** SWIMMERS.



TIGERS HAVE  
**POWERFUL** ROARS.



TIGER CUBS STAY  
WITH **MOM**.



TIGERS ARE  
**SOLITARY** ANIMALS.



TIGERS KEEP  
THEIR FUR **CLEAN**.



LEOPARDS ARE  
**SOLITARY** ANIMALS.



LEOPARDS ARE  
**EXCELLENT** CLIMBERS.



LEOPARDS HAVE  
AMAZING **CAMOUFLAGE**.



LEOPARDS ARE  
**CARNIVORES**.



LEOPARDS CAN  
RUN **FAST**.



EVERY LEOPARD HAS  
**UNIQUE** SPOTS.



LEOPARDS **REST**  
DURING THE DAY.



LEOPARDS ARE  
**NIGHT** HUNTERS.



ELEPHANTS USE  
THEIR **TRUNKS**  
TO DO MANY THINGS.



ELEPHANTS ARE  
**HERBIVORES**.



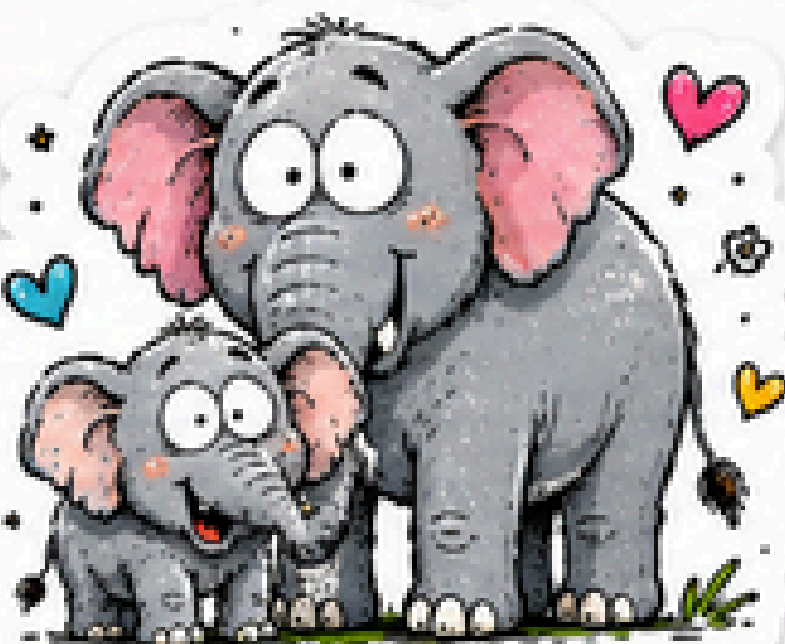
ELEPHANTS HAVE  
BIG, STRONG **EARS**.



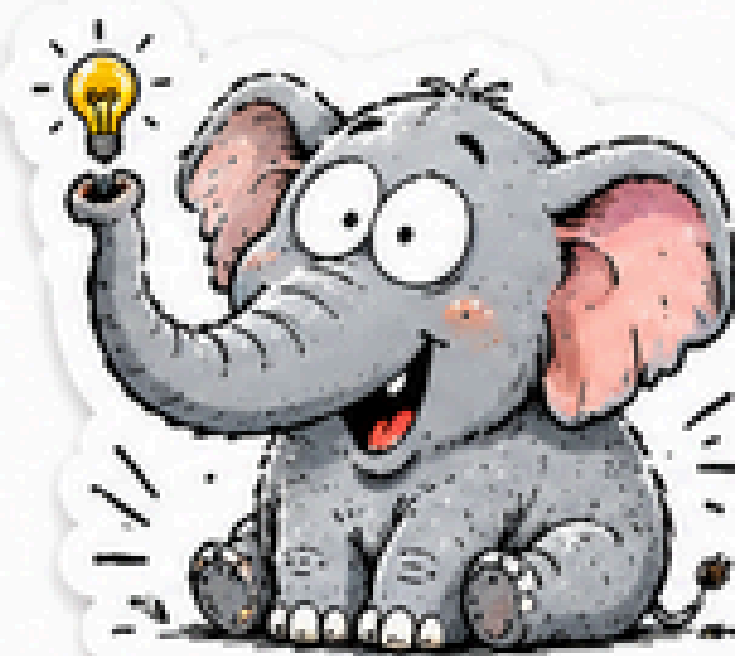
ELEPHANTS **LOVE** TO  
PLAY IN **WATER**.



ELEPHANTS HAVE  
LONG **TUSKS**.



ELEPHANTS LIVE  
IN **FAMILIES**.



ELEPHANTS ARE  
VERY **SMART**.



ELEPHANTS SLEEP  
FOR **A FEW HOURS**  
EACH DAY.



CHEETAHS ARE :  
**THE FASTEST**  
LAND ANIMALS.



THEY CAN RUN UP TO  
**120 KILOMETERS**  
PER HOUR.



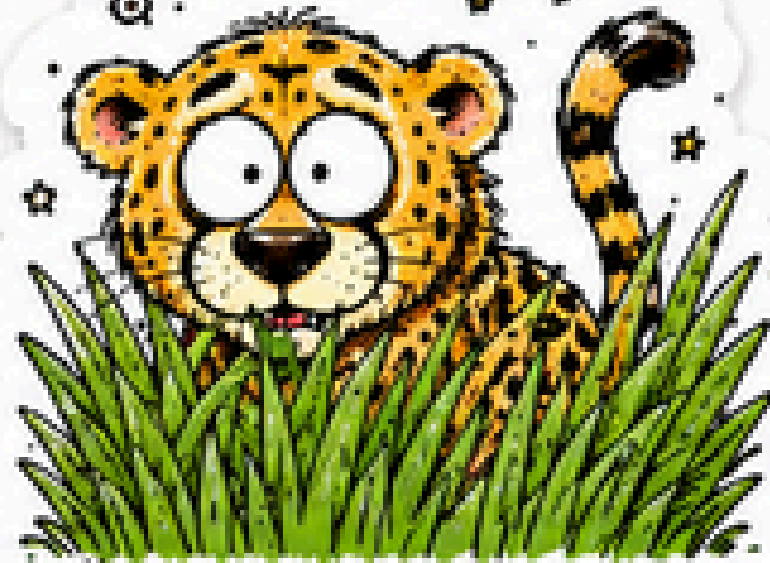
CHEETAHS HAVE :  
**UNIQUE** SPOTS.



THEY DON'T HAVE  
GOOD **STAMINA**.



CHEETAHS **STRETCH**  
BEFORE THEY RUN.



THEY ARE EXCELLENT  
AT **HIDING**.



THEIR CLAWS :  
GIVE GREAT **GRIP**.



CHEETAHS LIVE IN :  
**AFRICA** AND **IRAN**.



· ZEBRAS ARE ·  
· **BLACK** WITH ·  
· WHITE STRIPES. ·



· ZEBRAS ARE ·  
· **HERBIVORES.** ·



· ZEBRAS CAN ·  
· RUN **VERY FAST.** ·



· EACH ZEBRA HAS  
· A **UNIQUE** STRIPE  
· PATTERN. ·



· BABY ZEBRAS ARE ·  
· CALLED **FOALS.** ·



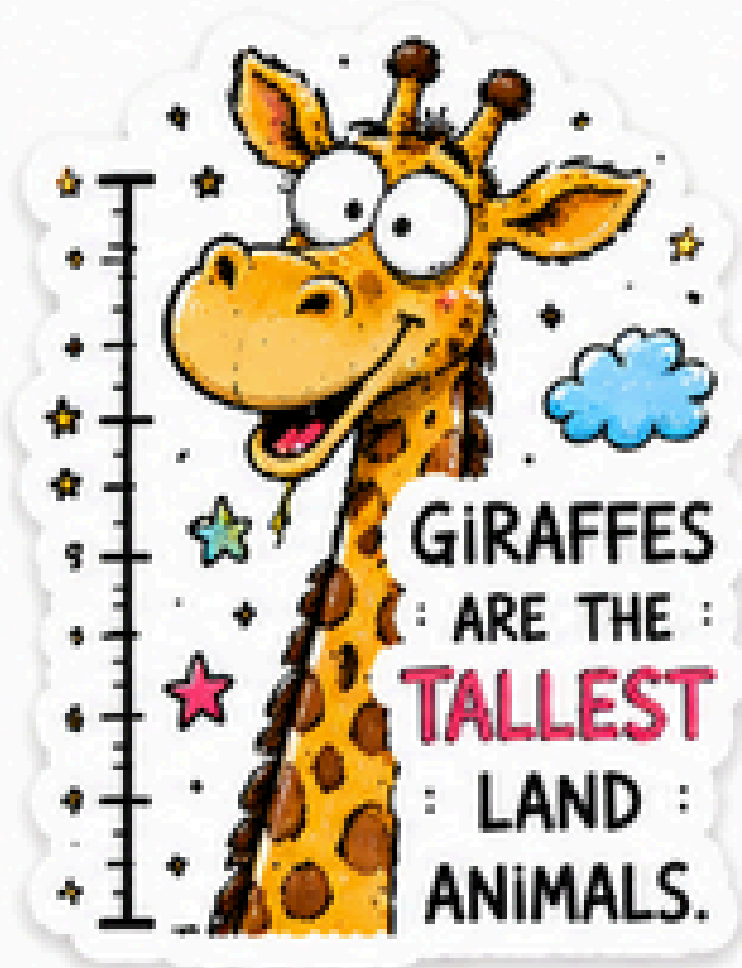
· ZEBRAS LIKE TO ·  
· ROLL IN THE **MUD.** ·



· ZEBRAS HAVE ·  
· GREAT **HEARING.** ·



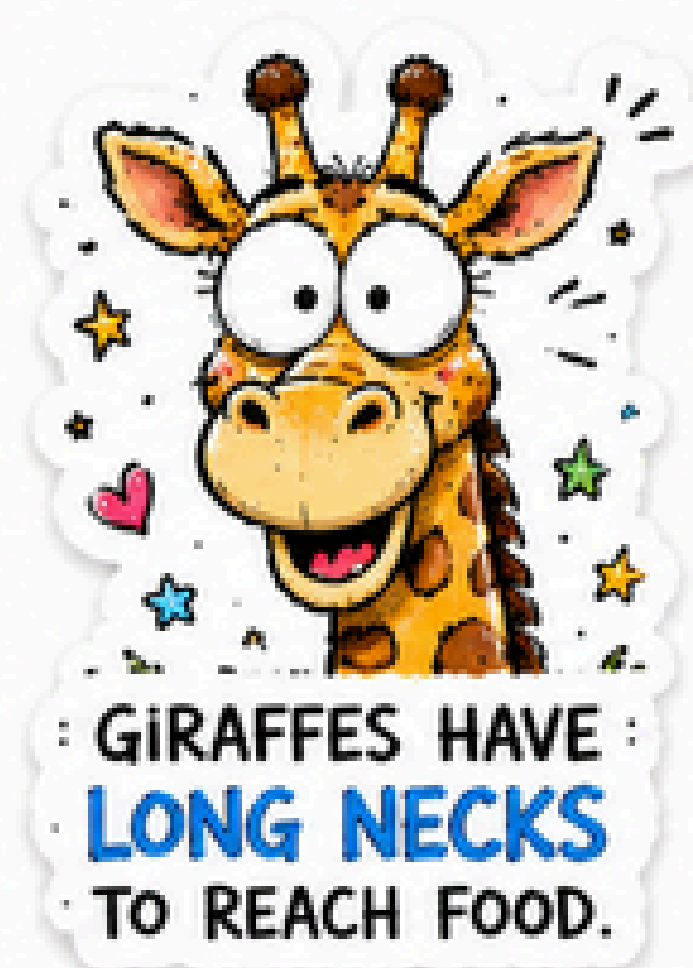
· ZEBRAS GRAZE ON ·  
· **GRASS** ALL DAY. ·



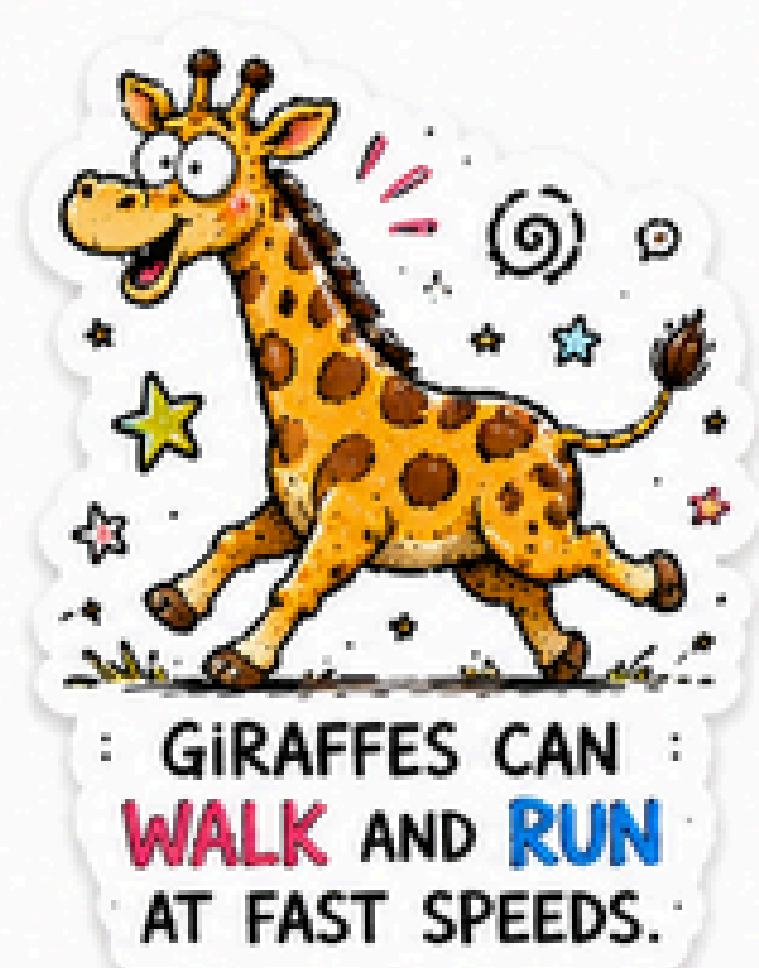
GIRAFFES  
ARE THE  
**TALLEST**  
LAND  
ANIMALS.



GIRAFFES EAT  
LEAVES FROM  
**TALL** TREES.



GIRAFFES HAVE  
**LONG NECKS**  
TO REACH FOOD.



GIRAFFES CAN  
**WALK** AND **RUN**  
AT FAST SPEEDS.



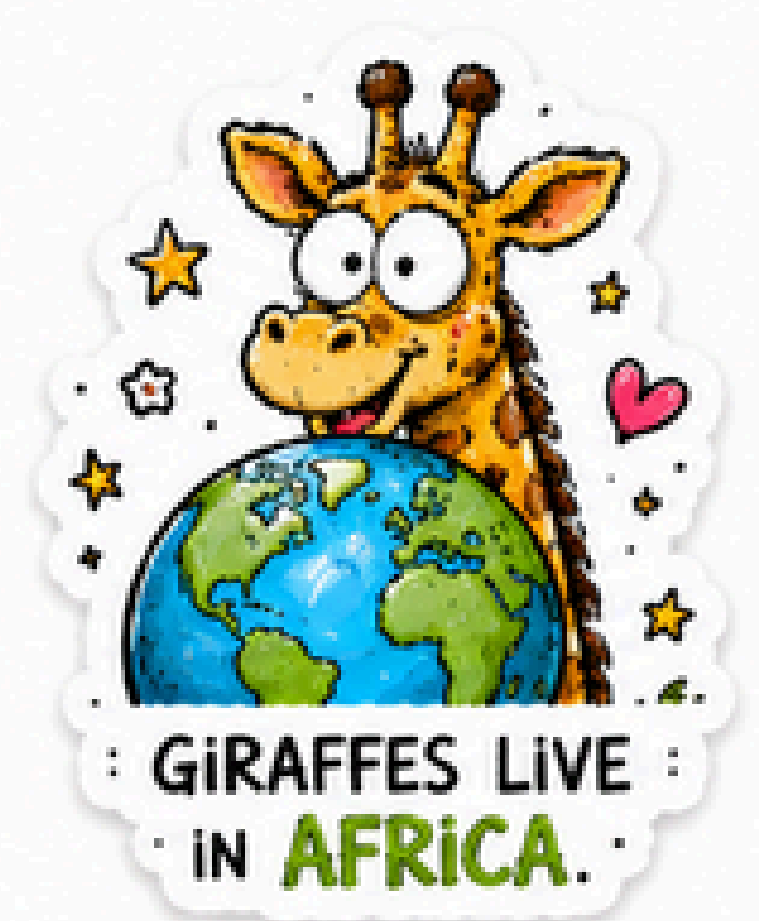
THEIR TONGUES  
ARE LONG AND  
**DARK PURPLE.**



BABY GIRAFFES ARE  
CALLED **CALVES.**



GIRAFFES ONLY  
NEED **A FEW HOURS**  
OF SLEEP.



GIRAFFES LIVE  
IN **AFRICA.**



: RHINOCEROSSES HAVE :  
THICK, **PROTECTIVE** SKIN.



: RHINOCEROSSES ARE :  
**HERBIVORES**.



: RHINOCEROSSES LOVE :  
TO ROLL IN THE **MUD**.



: RHINOCEROSSES HAVE :  
POOR **EYESIGHT**.



: BABY RHINOS ARE :  
CALLED **CALVES**.



: RHINOCEROSSES CAN :  
WEIGH OVER **2 TONS**.



: RHINOCEROSSES NEED :  
**WATER** EVERY DAY.



: RHINOCEROSSES ARE :  
**ENDANGERED**.



WOLVES ARE  
**WILD DOGS**,  
NOT CATS.



WOLVES **HOWL**  
TO COMMUNICATE  
WITH THEIR **PACK**.



WOLVES LIVE  
IN **PACKS**. FAMILY IS  
VERY **IMPORTANT**.



WOLVES CAN RUN  
UP TO **60 KM/H**.



WOLVES HAVE AN  
**AMAZING** SENSE  
OF **SMELL**.



WOLVES HELP KEEP  
NATURE **BALANCED**  
BY **HUNTING**.



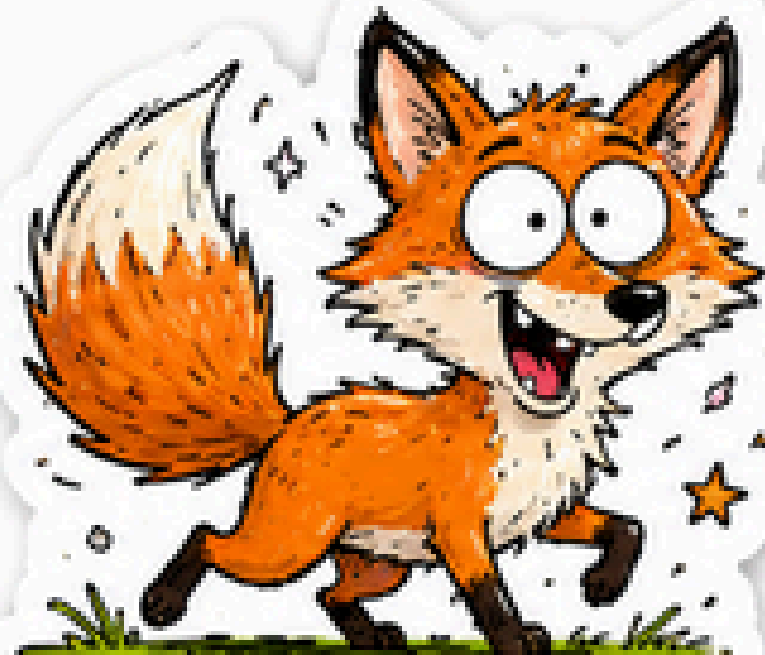
WOLVES HAVE  
**THICK FUR** TO STAY  
WARM IN **WINTER**.



WOLVES REST DURING  
THE DAY AND **HUNT**  
AT **NIGHT**.



FOXES ARE  
**MAMMALS.**



FOXES HAVE **BUSHY**  
TAILS.



FOXES HAVE  
**EXCELLENT** HEARING.



FOXES CAN RUN  
VERY **FAST.**



FOXES ARE  
**OMNIVORES.**



FOXES LIVE IN **DENS.**



FOXES HAVE THICK  
FUR TO STAY **WARM.**



FOXES HAVE A GREAT  
**SENSE OF SMELL.**



HIPPOS SPEND MOST OF THEIR TIME **IN WATER.**



THEY CAN HOLD THEIR **BREATH** FOR **5** MINUTES.



HIPPOS ARE **HERBIVORES.** THEY EAT PLANTS.



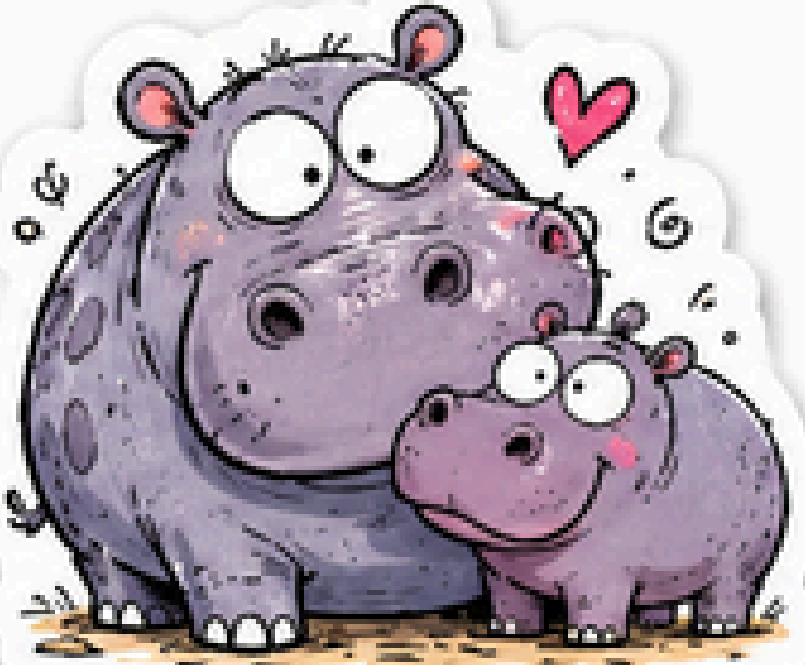
THEIR TEETH **NEVER** STOP GROWING.



THEY CAN SLEEP **UNDERWATER.**



HIPPOS CAN RUN SURPRISINGLY **FAST** ON LAND!



**BABY HIPPOS** ARE CALLED CALVES.



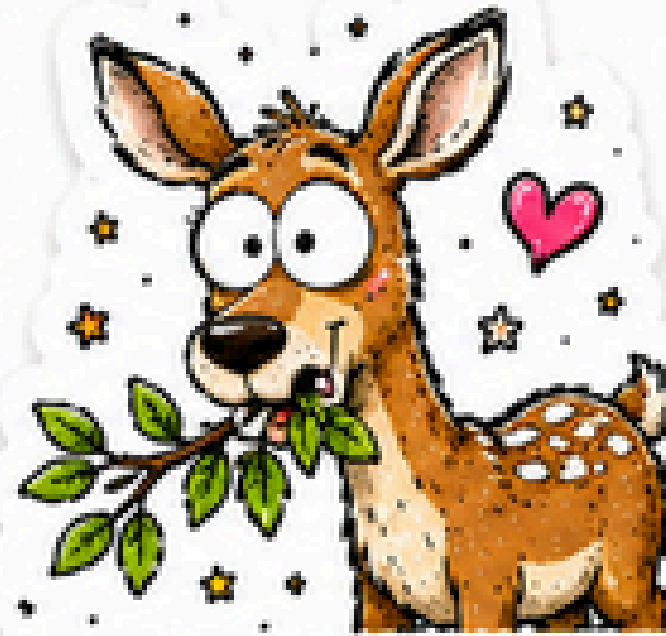
HIPPOS HAVE VERY **SENSITIVE** SKIN.



DEER ARE **MAMMALS**.  
THEY HAVE FUR.



MALE DEER GROW  
**ANTLERS** EACH YEAR.



DEER ARE **HERBIVORES**.  
THEY EAT PLANTS.



DEER CAN RUN  
VERY **FAST**.



BABY DEER ARE  
CALLED **FAWNS**.



DEER SHED THEIR  
**ANTLERS** EVERY YEAR.



DEER HAVE **EXCELLENT**  
HEARING AND SMELL.



DEER LIVE IN FORESTS,  
GRASSLANDS, AND  
**WOODLANDS**.



BEARS ARE  
MAMMALS.  
THEY HAVE FUR.



BEARS HAVE A  
VARIED DIET.  
THEY EAT MANY FOODS.



BEARS HIBERNATE  
DURING THE WINTER.



BEARS HAVE AN  
EXCELLENT SENSE  
OF SMELL.



BEARS CAN STAND  
UP TO 10 FEET TALL  
ON THEIR HIND LEGS.



BABY BEARS ARE  
CALLED CUBS.



BEARS ARE GREAT  
SWIMMERS.



RESPECT  
WILDLIFE,  
KEEP BEARS  
SAFE! ♥



PANDAS EAT ALMOST ONLY **BAMBOO**.



PANDAS ARE EXCELLENT **CLIMBERS**.



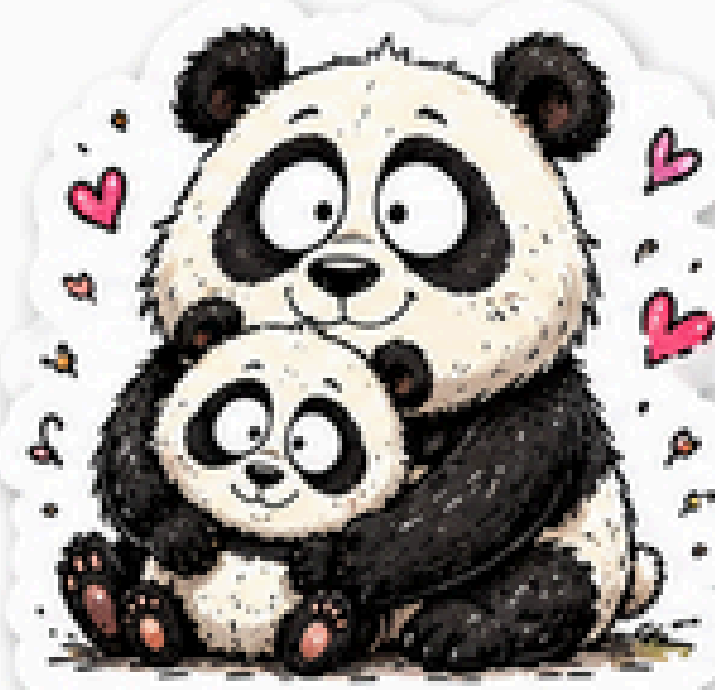
PANDAS SPEND **10 TO 16 HOURS** EATING DAILY.



PANDAS HAVE **"THUMB"** TO HOLD FOOD.



PANDAS ARE NATIVE TO **CHINA**.



PANDA CUBS ARE BORN **VERY SMALL**.



PANDAS SLEEP **10 TO 12 HOURS** DAILY.



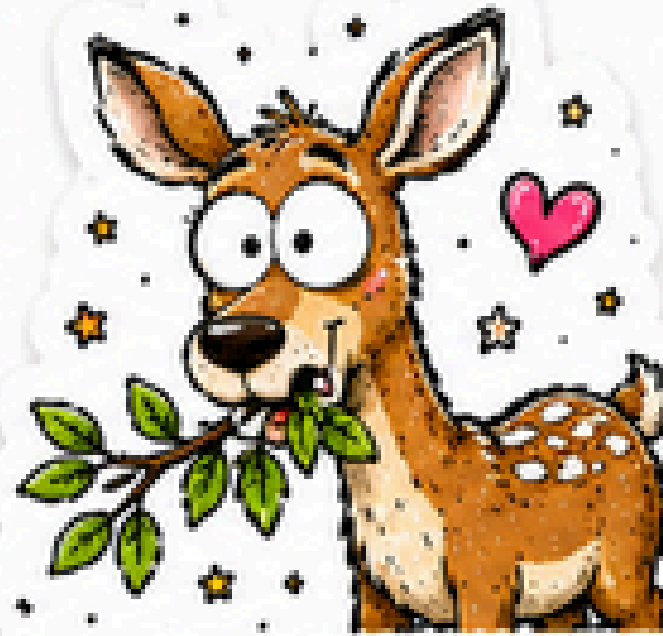
PANDAS ARE A SYMBOL OF **PEACE**.



DEER ARE **MAMMALS**.  
THEY HAVE FUR.



MALE DEER GROW  
**ANTLERS** EACH YEAR.



DEER ARE **HERBIVORES**.  
THEY EAT PLANTS.



DEER CAN RUN  
VERY **FAST**.



BABY DEER ARE  
CALLED **FAWNS**.



DEER SHED THEIR  
**ANTLERS** EVERY YEAR.



DEER HAVE **EXCELLENT**  
HEARING AND SMELL.



DEER LIVE IN FORESTS,  
GRASSLANDS, AND  
**WOODLANDS**.



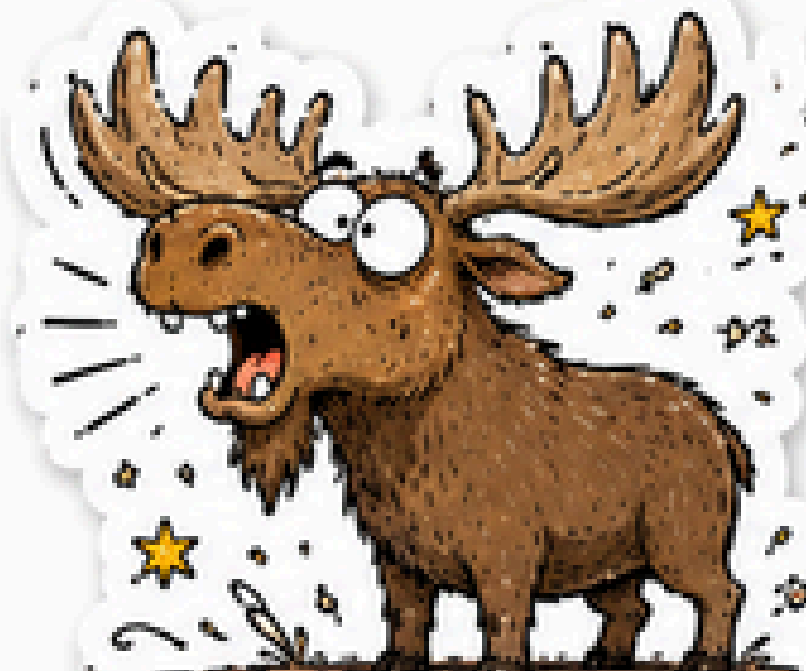
MOOSE ARE THE  
**LARGEST** DEER.



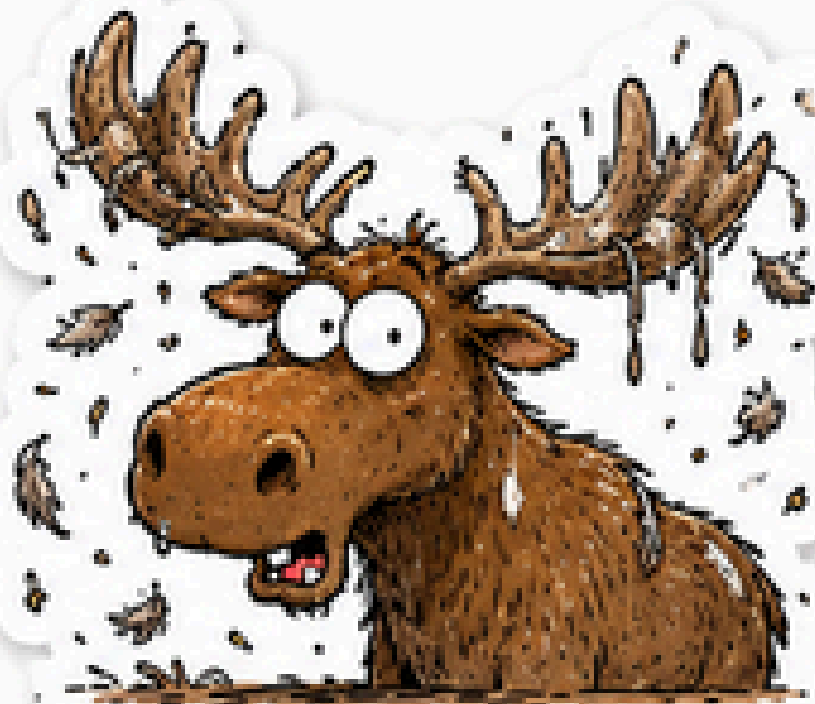
MOOSE ARE  
**GOOD** SWIMMERS.



MOOSE **EAT** LEAVES,  
TWIGS, AND PLANTS.



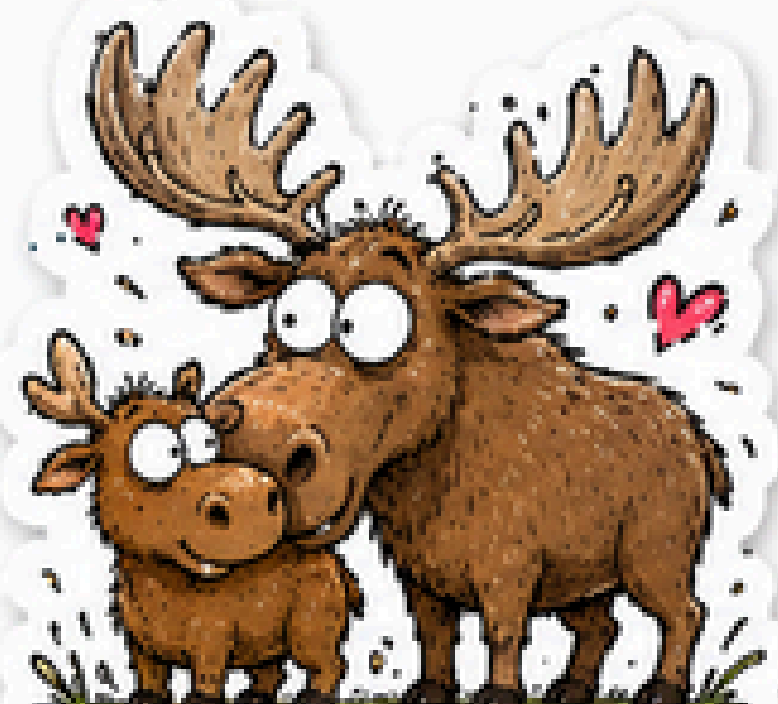
MALE MOOSE MAKE  
**LOUD** CALLS.



MOOSE SHED THEIR  
**ANTLERS** EVERY YEAR.



MOOSE LIVE IN  
**COLD** PLACES.



BABY MOOSE ARE  
CALLED **CALVES**.



MOOSE HAVE **LONG**  
LEGS TO WALK FAR.



ELK ARE **LARGE** MEMBERS  
OF THE DEER FAMILY.



ELK ARE **HERBIVORES**.  
THEY EAT PLANTS.



MALE ELK BUGLE  
TO **ATTRACT** FEMALES.



ELK ANTLERS CAN  
GROW VERY **LARGE**.



ELK SHED THEIR  
**ANTLERS** EVERY YEAR.



ELK LIVE IN FORESTS  
AND **MOUNTAIN** AREAS.



BABY ELK ARE  
CALLED **CALVES**.



ELK CAN RUN  
UP TO **45 MPH**.



BISON ARE THE  
**LARGEST** LAND ANIMALS  
IN NORTH AMERICA.



BISON EAT **GRASSES**,  
**HERBS**, AND LEAVES.



BISON CAN RUN  
UP TO **40 MILES**  
PER HOUR.



BISON HAVE THICK FUR  
TO STAY **WARM** IN WINTER.



BISON USE THEIR HEADS  
TO **PUSH SNOW AWAY**.



BABY BISON ARE  
CALLED **CALVES**.



BISON LIKE TO ROLL  
IN **DUST** AND **DIRT**.



BISON HAVE GOOD  
**EYESIGHT** AND **HEARING**.



BUFFALO ARE **LARGE**  
**MAMMALS.**



BUFFALO ARE  
**HERBIVORES.**



BUFFALO LOVE TO  
WALLOW IN **MUD.**



BUFFALO CAN RUN  
UP TO **35 MPH.**



BABY BUFFALO ARE  
CALLED **CALVES.**



BUFFALO HAVE **STRONG**  
BODIES AND **HORNS.**



BUFFALO GROW THICK  
FUR FOR **WINTER.**



LET'S **PROTECT**  
BUFFALO HABITATS.



WILD BOARS ARE  
**STRONG** AND **POWERFUL**.



WILD BOARS USE THEIR  
**SNOUTS** TO ROOT FOR FOOD.



THEY LOVE TO ROLL  
IN **MUD** TO COOL OFF.



WILD BOARS CAN RUN  
UP TO **30 MILES** PER HOUR.



BABY WILD BOARS  
ARE CALLED **PIGLETS**.



WILD BOARS LIVE IN  
**FORESTS** AND **GRASSLANDS**.



THEY EAT **PLANTS**,  
**FRUITS**, AND **INSECTS**.



WILD BOARS ARE  
MOSTLY ACTIVE AT **NIGHT**.



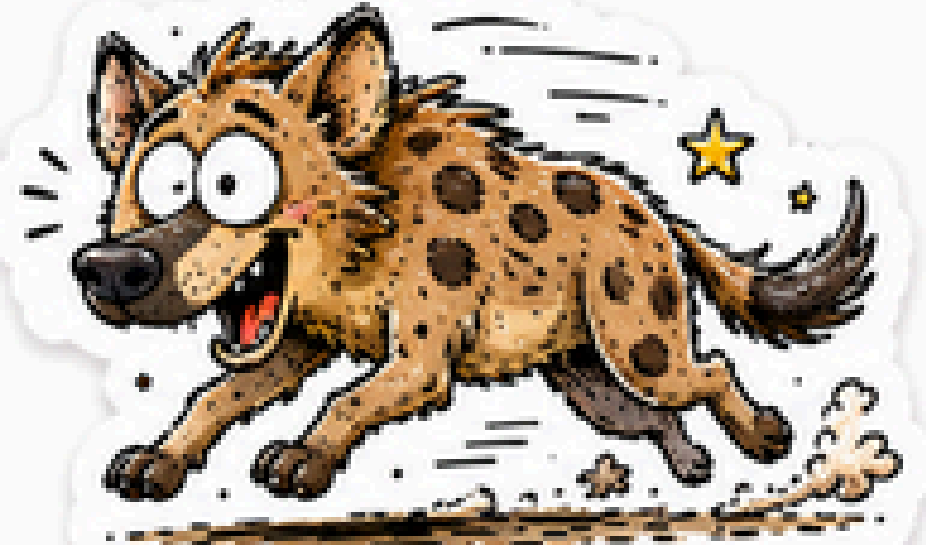
HYENAS ARE  
**MAMMALS**. THEY  
HAVE FUR.



HYENAS ARE  
**SCAVENGERS**. THEY  
EAT LEFTOVERS.



HYENAS HAVE  
UNIQUE **LAUGHS**  
TO COMMUNICATE.



HYENAS CAN RUN  
UP TO **40 MPH**.



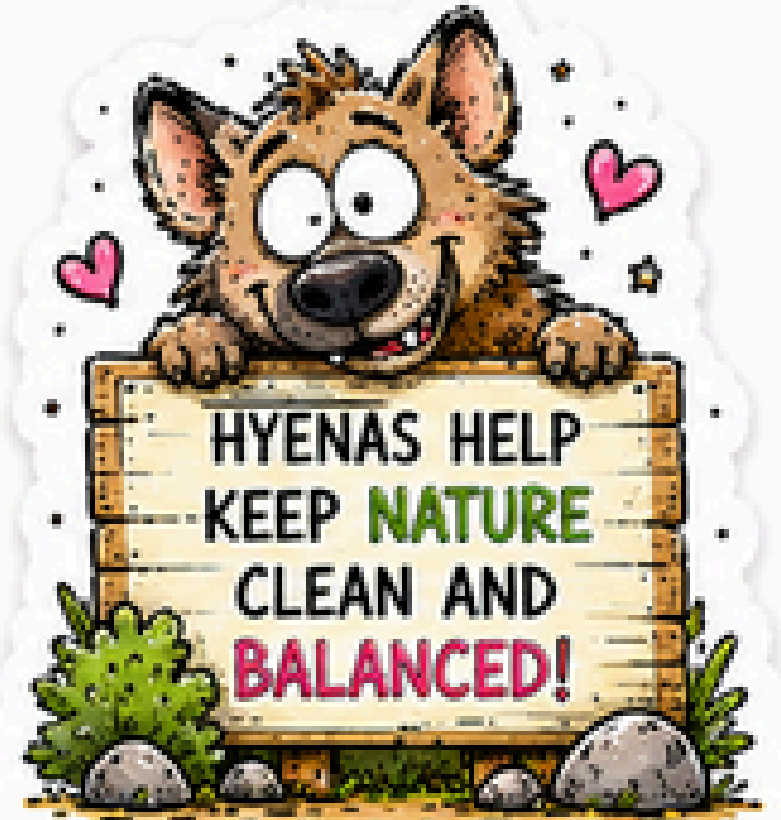
HYENAS ARE MOST  
ACTIVE AT **NIGHT**.



HYENAS LIVE IN  
**CLANS** CALLED  
**PACKS**.



FEMALE HYENAS ARE  
LARGER AND **LEAD**  
THE CLANS.



HYENAS HELP  
KEEP **NATURE**  
CLEAN AND  
**BALANCED!**



CAMELS ARE  
**MAMMALS**.  
THEY HAVE FUR.



CAMELS STORE FAT  
IN THEIR **HUMPS**.



CAMELS CAN GO  
MANY DAYS **WITHOUT**  
**WATER**.



CAMELS EAT  
**TOUGH PLANTS**  
LIKE THORNBUSH.



CAMELS HAVE LONG  
**EYELASHES** TO PROTECT  
THEIR EYES.



CAMELS HAVE WIDE,  
PADDED FEET FOR **SAND**.



CAMELS REST DURING  
THE **HOTTEST** PART  
OF THE DAY.



CAMELS ARE  
**AMAZING ANIMALS**  
OF THE  
**DESERT!** ♥



JACKALS ARE  
**WILD DOGS,**  
NOT FOXES.



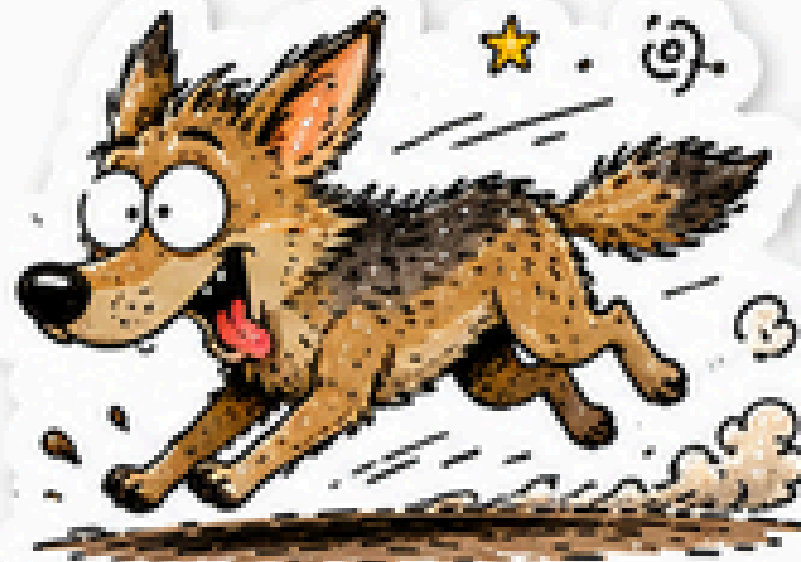
JACKALS ARE  
MOST ACTIVE  
AT **NIGHT.**



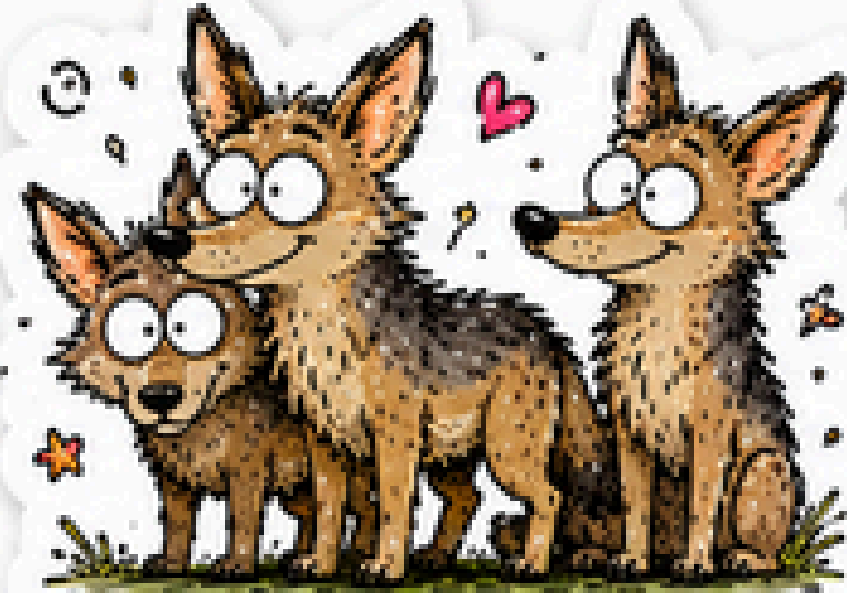
JACKALS EAT  
**FRUITS, INSECTS,**  
AND SMALL ANIMALS.



JACKALS HAVE  
EXCELLENT **HEARING**  
AND **SMELL.**



JACKALS CAN RUN  
UP TO **40 MILES**  
PER HOUR.



JACKALS LIVE IN  
GROUPS CALLED  
**PACKS.**



JACKALS **DIG DENS**  
TO LIVE AND RAISE  
THEIR YOUNG.



JACKALS CAN SURVIVE  
IN **HOT DESERTS**  
AND **COLD AREAS.**



CHIMPANZEES ARE  
**PRIMATES**. THEY ARE  
OUR CLOSE RELATIVES.



CHIMPANZEES ARE  
VERY **STRONG** CLIMBERS.



CHIMPANZEES USE **TOOLS**  
TO SOLVE PROBLEMS.



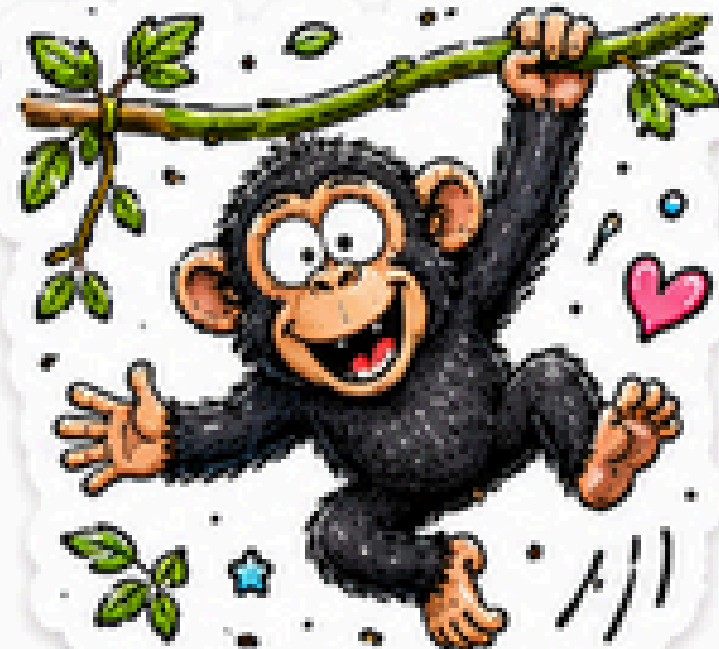
CHIMPANZEES EAT  
**FRUITS, LEAVES,**  
AND INSECTS.



CHIMPANZEES LIVE IN  
**SOCIAL** FAMILIES.



CHIMPANZEES  
**COMMUNICATE** WITH  
GESTURES AND SOUNDS.



CHIMPANZEES ARE  
VERY **PLAYFUL** ANIMALS.



CHIMPANZEES  
HELP KEEP FORESTS  
**HEALTHY!** ♥



· KOALAS LIVE IN  
**EUCALYPTUS** FORESTS.



· KOALAS EAT ALMOST  
ONLY **EUCALYPTUS** LEAVES.



· KOALAS SLEEP UP TO  
**20 HOURS** EACH DAY.



· KOALAS HAVE BIG  
**NOSES** FOR SMELLING.



· BABY KOALAS ARE  
CALLED **JOEYS**.



· KOALAS HAVE **STRONG**  
ARMS FOR CLIMBING.



· KOALAS HAVE SHARP  
**CLAWS** FOR GRIP.



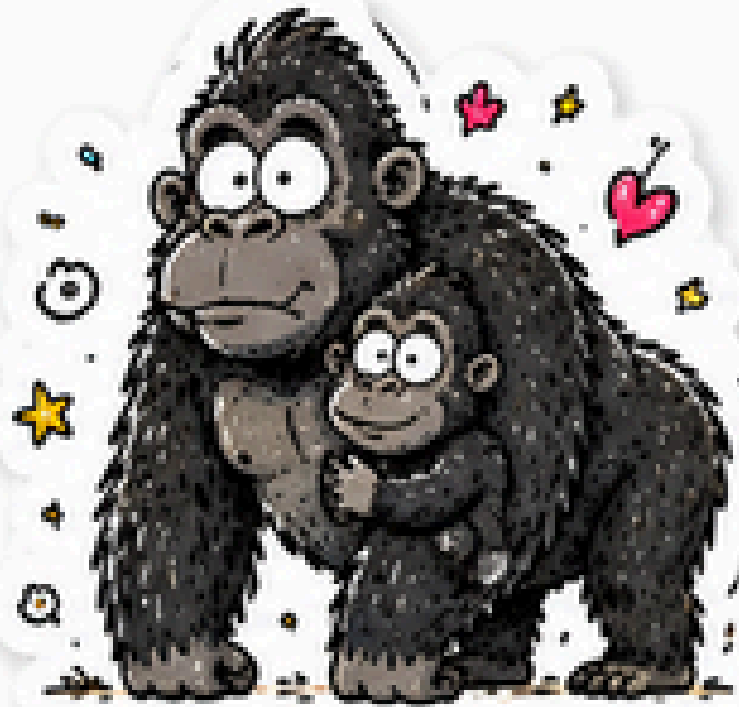
· KOALAS HELP KEEP  
FORESTS **HEALTHY!**



GORILLAS ARE  
THE **LARGEST**  
APES.



THEY ARE **HERBIVORES**  
AND EAT PLANTS.



BABY GORILLAS  
STAY WITH **MOM**  
FOR YEARS.



GORILLAS ARE  
VERY **STRONG**.



THEY ARE  
VERY **SMART**  
AND CAN LEARN.



GORILLAS BEAT  
THEIR CHEST TO  
**COMMUNICATE**.



THEY LIVE IN **FORESTS**  
IN AFRICA.



GORILLAS ARE  
**ENDANGERED**.  
LET'S PROTECT THEM!



ORANGUTANS ARE  
**GREAT APES** FROM  
SOUTHEAST ASIA.



THEY SPEND MOST  
OF THEIR TIME **IN TREES**.



ORANGUTANS EAT  
**FRUITS, LEAVES, AND**  
**INSECTS**.



THEY ARE VERY **SMART**  
AND CAN LEARN  
NEW THINGS.



BABY ORANGUTANS  
STAY WITH THEIR  
**MOMS** FOR YEARS.



THEY USE LONG ARMS  
TO SWING **EASILY**  
THROUGH THE FOREST.



ORANGUTANS ARE  
**SOLITARY** AND LIKE  
THEIR OWN SPACE.



DEFORESTATION IS  
THE BIGGEST **THREAT**  
TO ORANGUTANS.



MONKEYS ARE  
VERY **SMART** ANIMALS.



MONKEYS EAT  
**FRUITS, NUTS,**  
AND LEAVES.



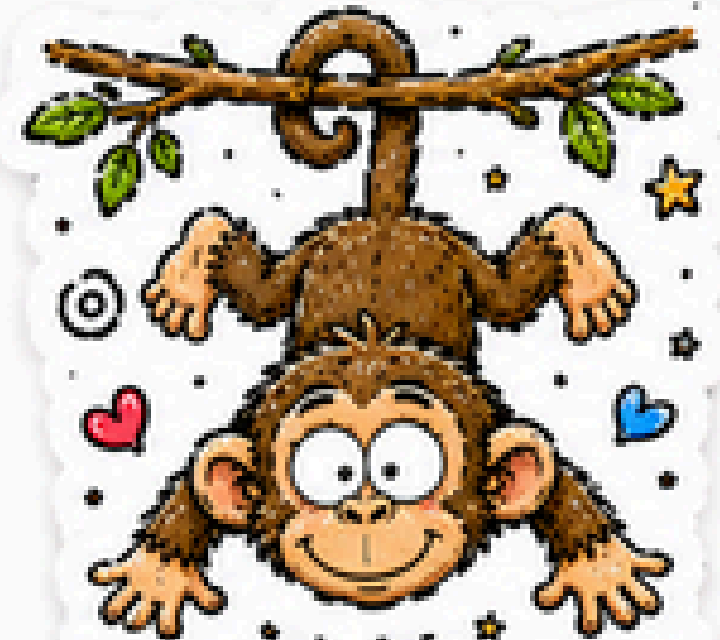
MONKEYS HAVE  
**STRONG ARMS**  
FOR SWINGING.



MONKEYS CAN  
**SOLVE** PROBLEMS  
AND PUZZLES.



MONKEYS LIVE IN  
GROUPS CALLED  
**TROOPS.**



MONKEYS USE THEIR  
**TAILS** FOR BALANCE.



BABY MONKEYS ARE  
CALLED **INFANTS.**



MONKEYS LOVE TO  
**PLAY** AND **EXPLORE.**



SLOTHS ARE VERY  
**SLOW** AND **SAVE**  
**ENERGY.**



SLOTHS EAT **LEAVES**,  
**SHOOTS**, AND **FRUITS.**



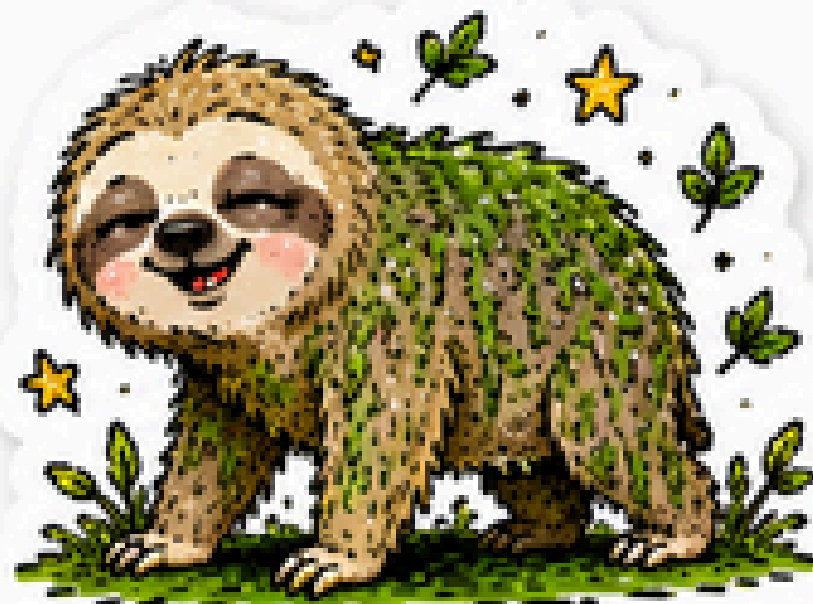
SLOTHS SPEND MOST  
OF THEIR LIVES IN  
**TREES.**



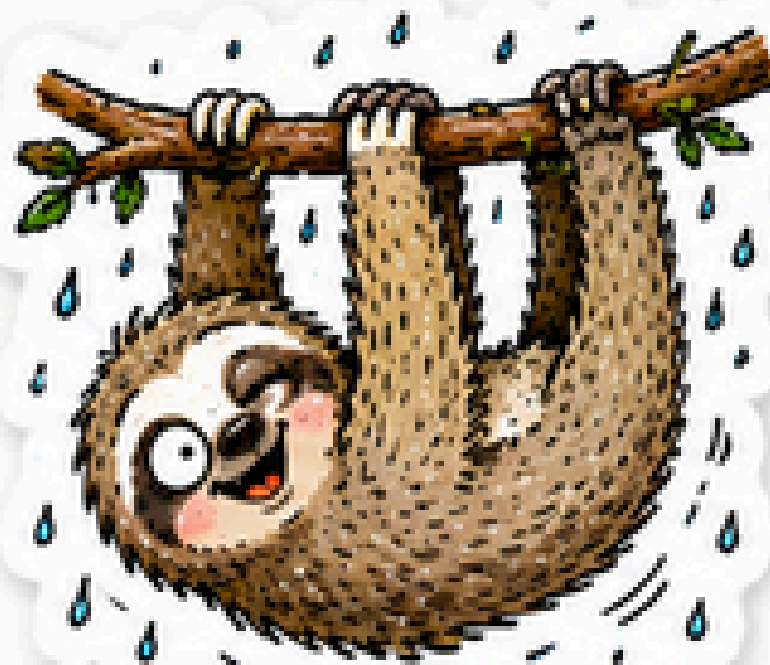
SLOTHS **SLEEP**  
ABOUT **15 TO 20**  
HOURS A DAY.



SLOTHS HAVE **LONG**  
**ARMS** FOR HANGING  
AND CLIMBING.



**ALGAE** GROWS ON  
SLOTH FUR AND  
HELPS **CAMOUFLAGE.**



SLOTHS CAN **SWIM**  
SURPRISINGLY WELL!



SLOTHS ARE **GENTLE**  
ANIMALS AND ARE  
IMPORTANT TO **PROTECT.**



ARMADILLOS HAVE  
**HARD SHELLS** TO  
PROTECT THEM.



ARMADILLOS CAN  
**ROLL** INTO A BALL  
FOR SAFETY.



ARMADILLOS DIG  
**BURROWS** TO LIVE  
AND STAY COOL.



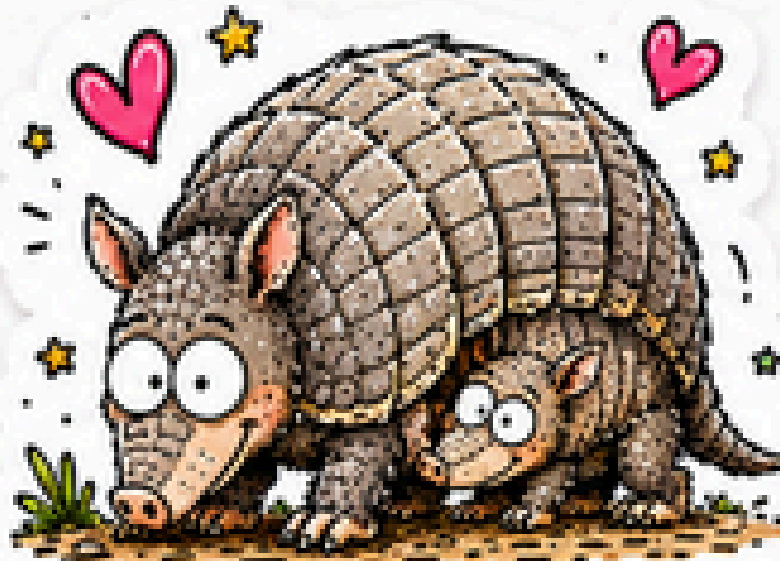
ARMADILLOS ARE  
**GREAT DIGGERS** WITH  
STRONG CLAWS.



ARMADILLOS EAT  
**INSECTS, WORMS,**  
AND SMALL ANIMALS.



ARMADILLOS HAVE  
**LARGE EARS** WITH  
GREAT HEARING.



BABY ARMADILLOS  
ARE **BORN IDENTICAL**  
QUADRUPLETS.



ARMADILLOS  
**HELP NATURE**  
BY CONTROLLING  
**INSECT POPULATIONS!**



SNAKES ARE **REPTILES**  
WITH **SCALES.**



SNAKES USE THEIR  
**TONGUE** TO SMELL.



SNAKES ARE  
GREAT **CLIMBERS.**



MOST SNAKES ARE  
**NOT** POISONOUS.



SNAKES **SHED** THEIR  
SKIN TO GROW.



SNAKES SWALLOW  
FOOD **WHOLE.**



SNAKES HAVE LONG,  
**FLEXIBLE** BODIES.



SNAKES HELP  
CONTROL **PESTS**  
IN **NATURE!**



ALLIGATORS ARE  
**REPTILES**, NOT FISH.



ALLIGATORS CAN  
**HOLD** THEIR BREATH  
FOR A LONG TIME.



ALLIGATORS HAVE  
**STRONG JAWS** AND  
SHARP TEETH.



ALLIGATORS ARE  
**COLD-BLOODED**, SO THEY  
NEED SUN TO WARM UP.



BABY ALLIGATORS  
HATCH FROM **EGGS**.



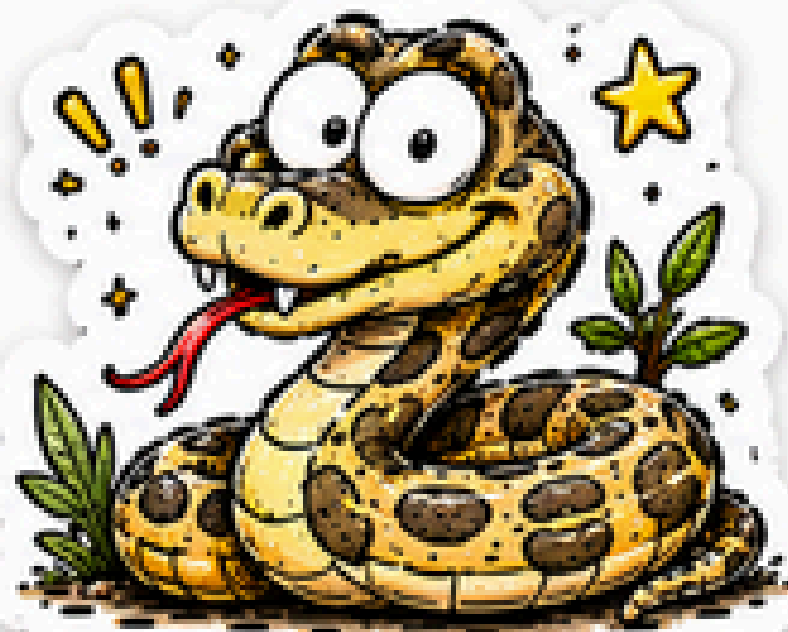
ALLIGATORS CAN  
MOVE **FAST** ON LAND  
AND SWIM WELL.



ALLIGATORS ARE  
MOST ACTIVE AT **NIGHT**.



ALLIGATORS HELP  
**KEEP WETLANDS  
HEALTHY!** ♥



∴ PYTHONS ARE  
∴ **NONVENOMOUS**  
∴ SNAKES. ∴



∴ PYTHONS ARE ∴  
∴ **EXCELLENT**  
∴ CLIMBERS. ∴



∴ PYTHONS **CONSTRICT**  
∴ THEIR PREY. ∴



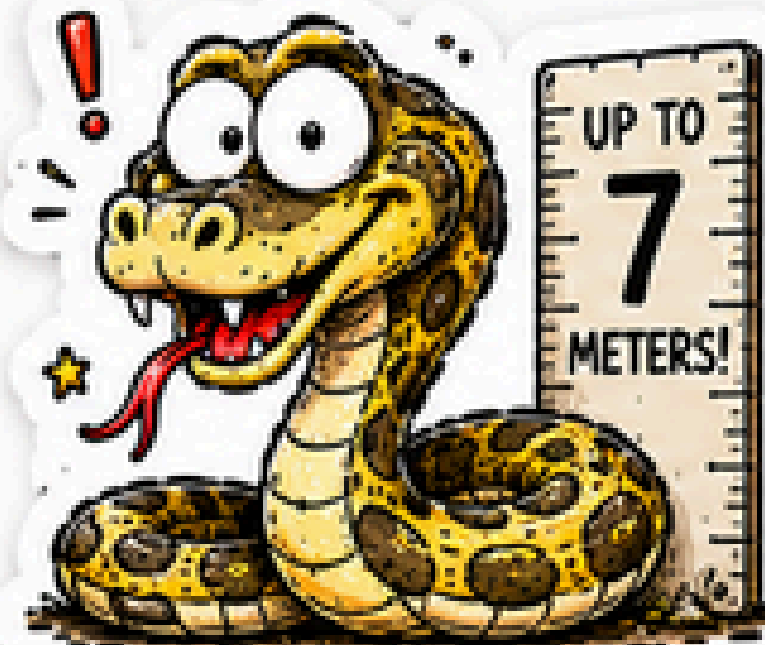
∴ PYTHONS ARE **STRONG**  
∴ SWIMMERS. ∴



∴ PYTHONS **SHED THEIR**  
∴ **SKIN** TO GROW. ∴



∴ PYTHONS ARE **COLD-**  
∴ **BLOODED** REPTILES. ∴



∴ PYTHONS CAN GROW  
∴ UP TO **7** METERS. ∴



∴ PYTHONS PLAY AN  
∴ **IMPORTANT ROLE**  
∴ IN **NATURE.** ∴



LIZARDS ARE  
**COLD-BLOODED**  
REPTILES.



LIZARDS CAN **CLIMB**  
ALMOST ANY SURFACE.



SOME LIZARDS HAVE  
**BRIGHT** COLORS.



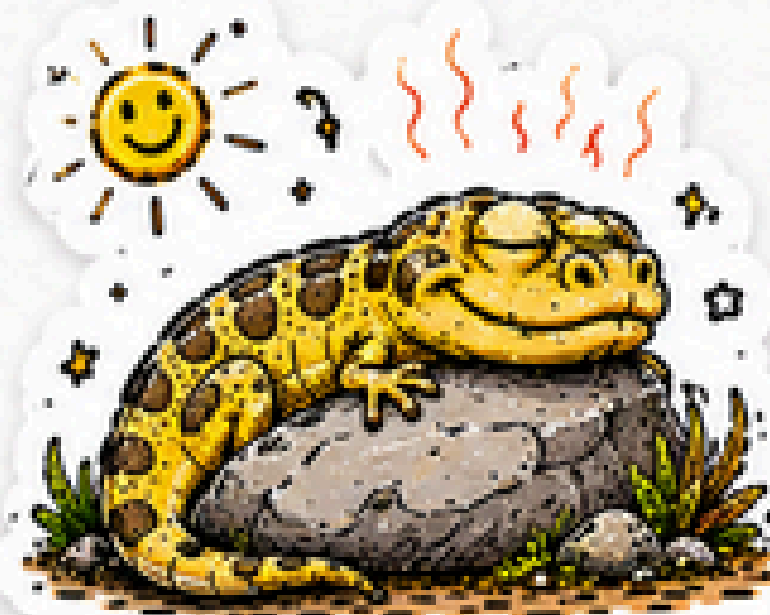
LIZARDS USE THEIR  
**TONGUES** TO CATCH FOOD.



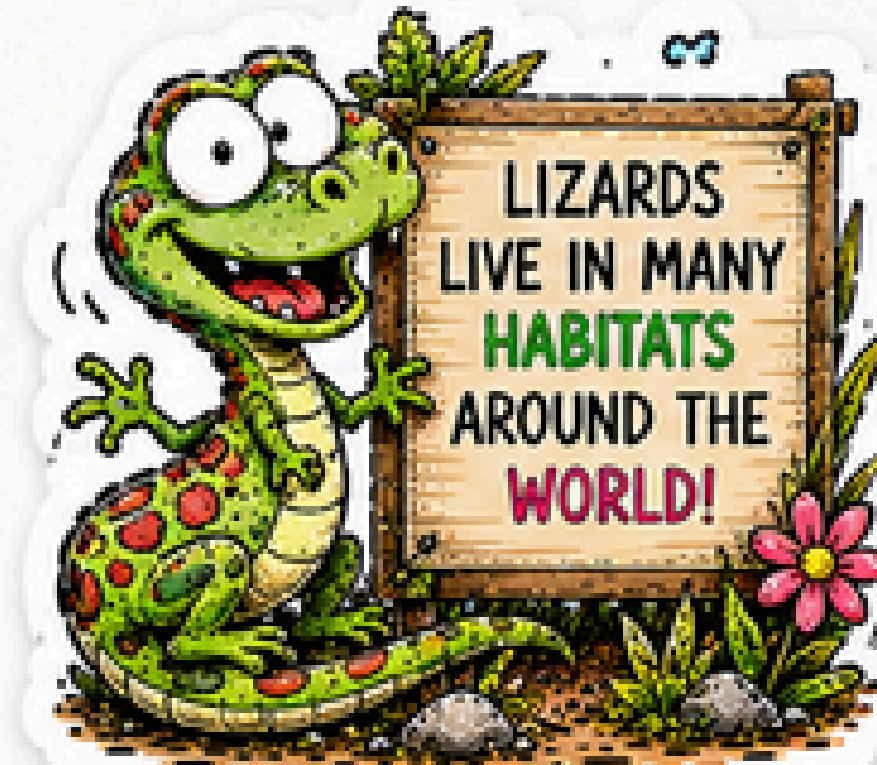
LIZARDS SHED THEIR  
**SKIN** TO GROW.



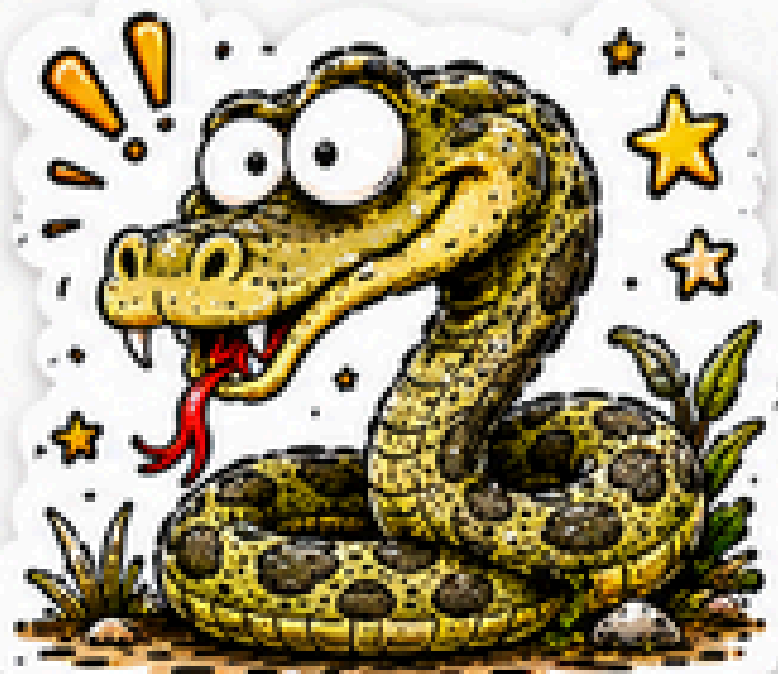
SOME LIZARDS CAN **DROP**  
THEIR TAILS TO ESCAPE.



LIZARDS **BASK** IN THE SUN  
TO STAY WARM.



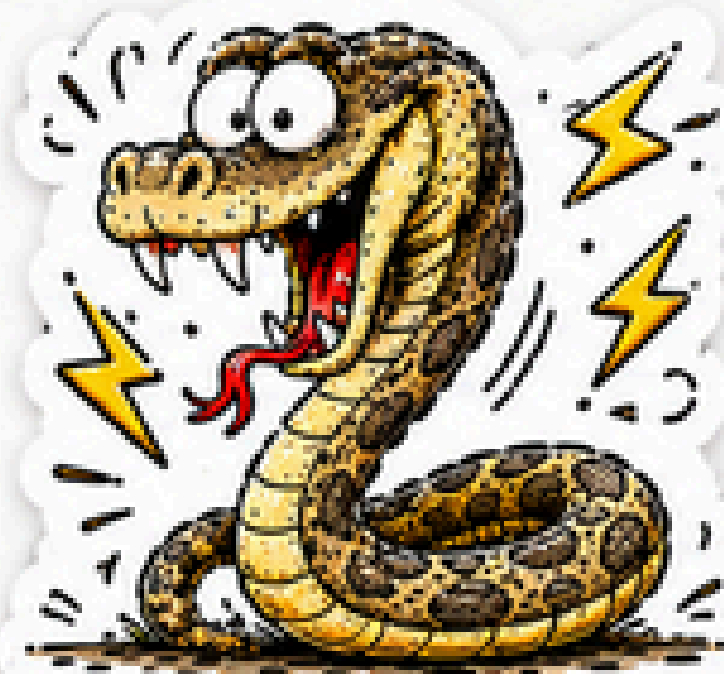
LIZARDS  
LIVE IN MANY  
**HABITATS**  
AROUND THE  
**WORLD!**



· VIPERS ARE **VENOMOUS** ·  
· SNAKES. ·



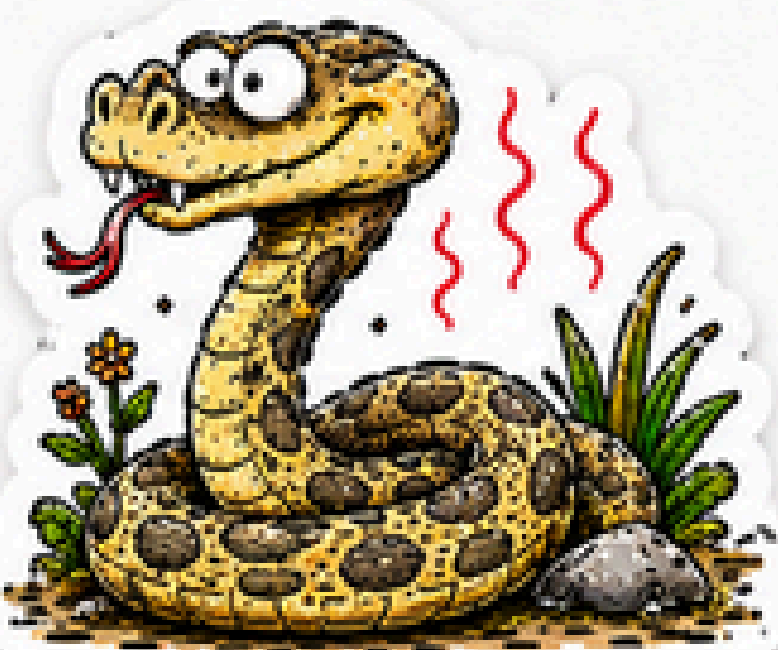
· VIPERS LIVE IN MANY ·  
· **HABITATS** WORLDWIDE. ·



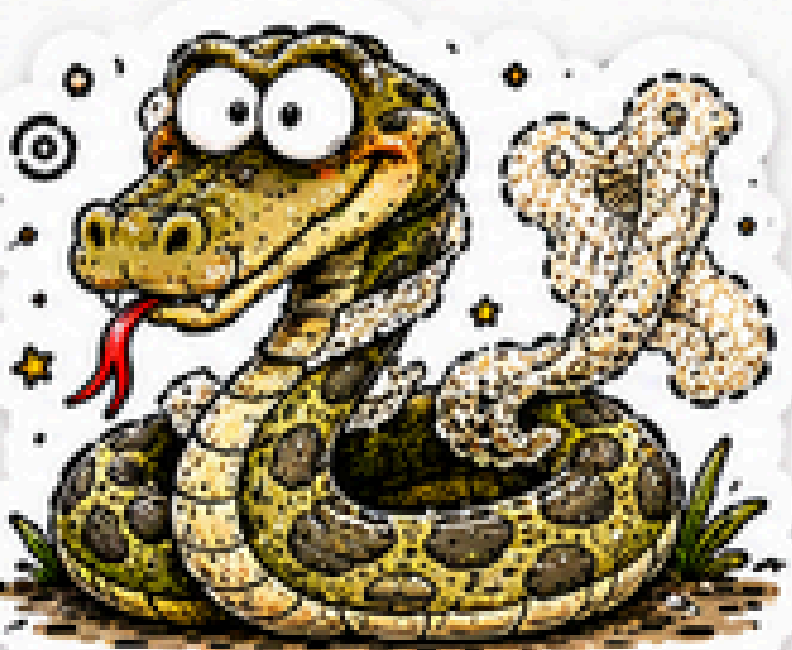
· VIPERS USE **VENOM** TO ·  
· **IMMOBILIZE** PREY. ·



· VIPERS ARE **SOLITARY** ·  
· BY NATURE. ·



· VIPERS CAN SENSE **HEAT** ·  
· FROM **WARM-BLOODED** ANIMALS. ·



· VIPERS SHED THEIR SKIN ·  
· TO **GROW**. ·



· MANY VIPERS ARE ·  
· MORE ACTIVE **AT NIGHT**. ·



VIPERS HAVE  
LONG HOLLOW  
**FANGS** FOR  
DELIVERING  
**VENOM!**



CHAMELEONS CAN  
CHANGE COLORS.



THEY CHANGE COLOR  
TO HIDE OR COMMUNICATE.



CHAMELEONS HAVE  
LONG, STICKY TONGUES.



THEY CAN MOVE THEIR  
EYES IN DIFFERENT  
DIRECTIONS.



SOME CHAMELEONS SHOW  
BRIGHT COLORS WHEN HAPPY.



CHAMELEONS LIVE IN  
WARM, TROPICAL PLACES.



THEY ARE EXCELLENT  
CLIMBERS.



CHAMELEONS  
PLAY AN IMPORTANT  
ROLE IN NATURE!



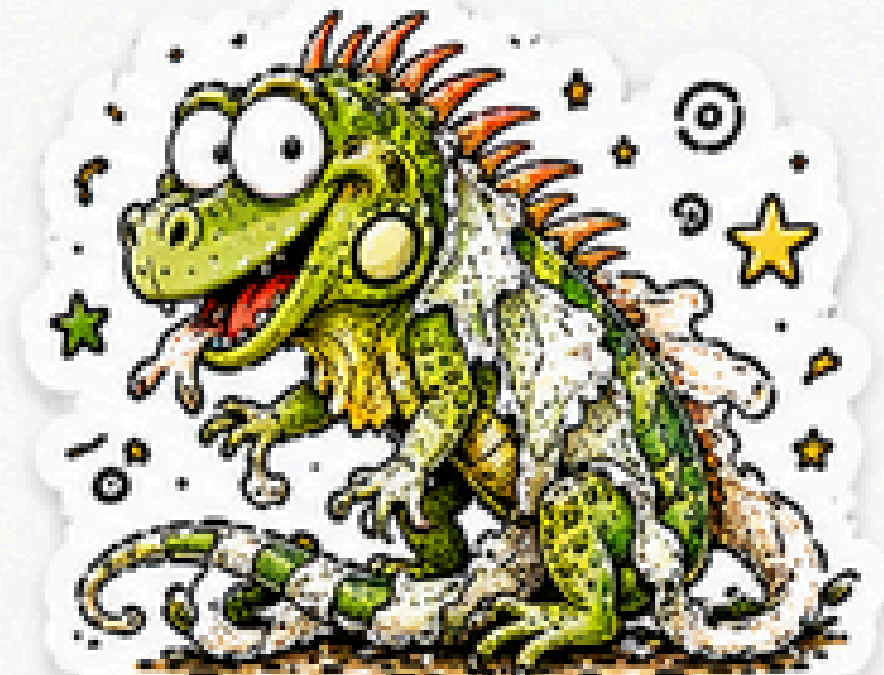
IGUANAS ARE  
REPTILES.



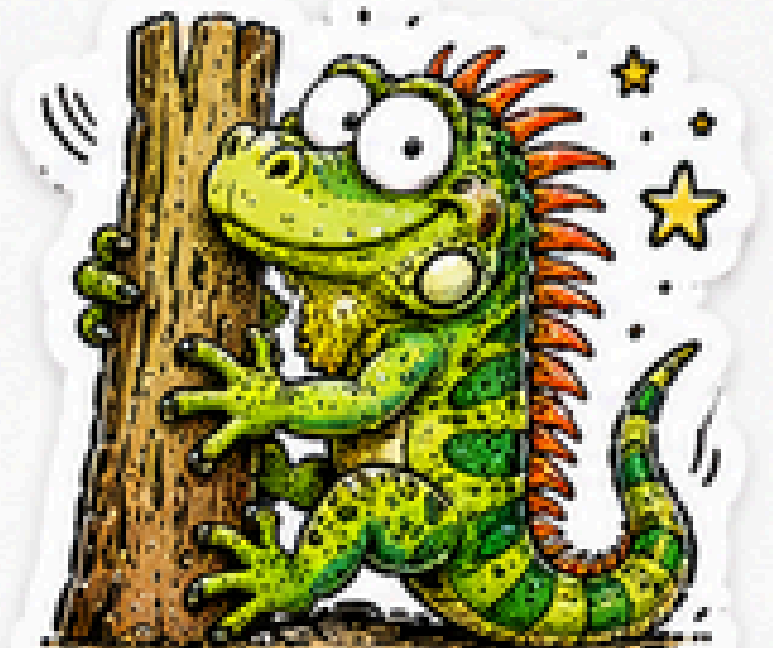
IGUANAS LOVE TO  
BASK IN THE SUN.



IGUANAS EAT PLANTS  
LIKE LEAVES AND FRUITS.



IGUANAS SHED THEIR  
SKIN TO GROW.



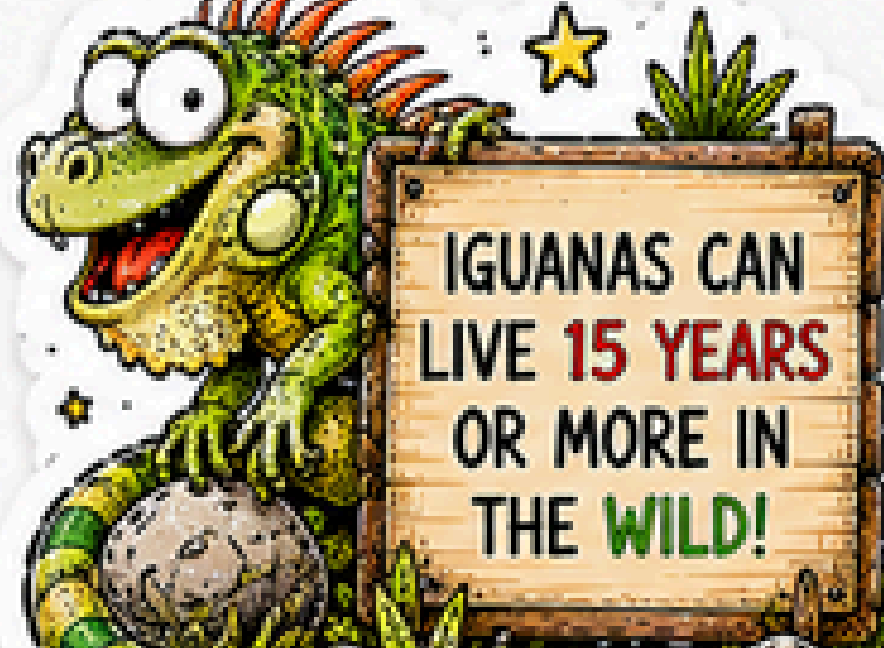
IGUANAS ARE GREAT  
CLIMBERS.



IGUANAS HAVE A DEWAP  
UNDER THEIR CHIN.



IGUANAS CAN SWIM  
VERY WELL.



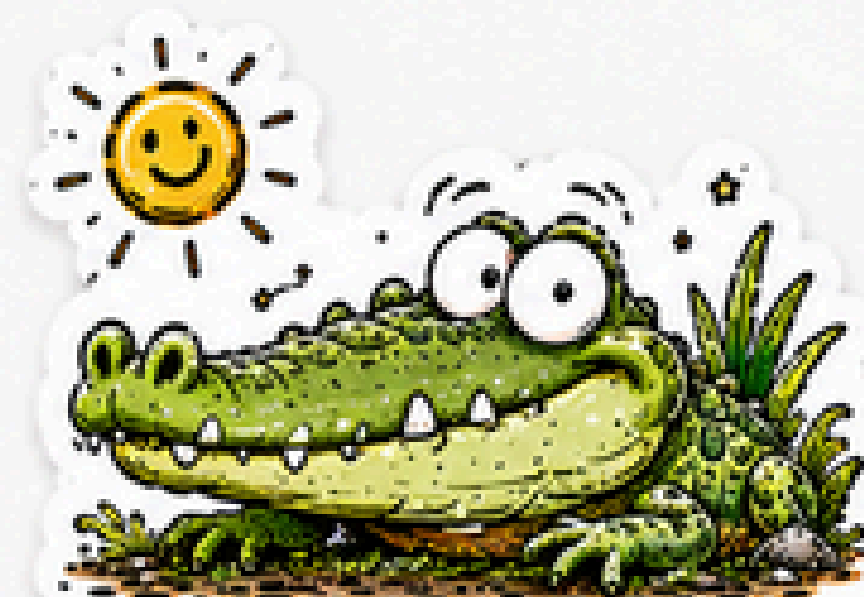
IGUANAS CAN  
LIVE 15 YEARS  
OR MORE IN  
THE WILD!



∴ CROCODILES ARE ∴  
∴ **REPTILES.** ∴



∴ THEY LIVE IN ∴  
∴ **RIVERS AND LAKES.** ∴



∴ CROCODILES ARE ∴  
∴ **COLD-BLOODED.** ∴



∴ THEY EAT **FISH, BIRDS,** ∴  
∴ **AND MAMMALS.** ∴



∴ CROCODILES HAVE VERY ∴  
∴ **STRONG** JAW MUSCLES. ∴



∴ THEY CAN STAY **STILL** ∴  
∴ FOR A **LONG** TIME. ∴



∴ CROCODILES HAVE ∴  
∴ **SHARP** TEETH. ∴



CROCODILES  
HAVE BEEN AROUND  
FOR OVER **200**  
**MILLION YEARS!**



LIZARDS ARE  
**COLD-BLOODED**  
REPTILES.



LIZARDS CAN **CLIMB**  
ALMOST ANY SURFACE.



SOME LIZARDS HAVE  
**BRIGHT** COLORS.



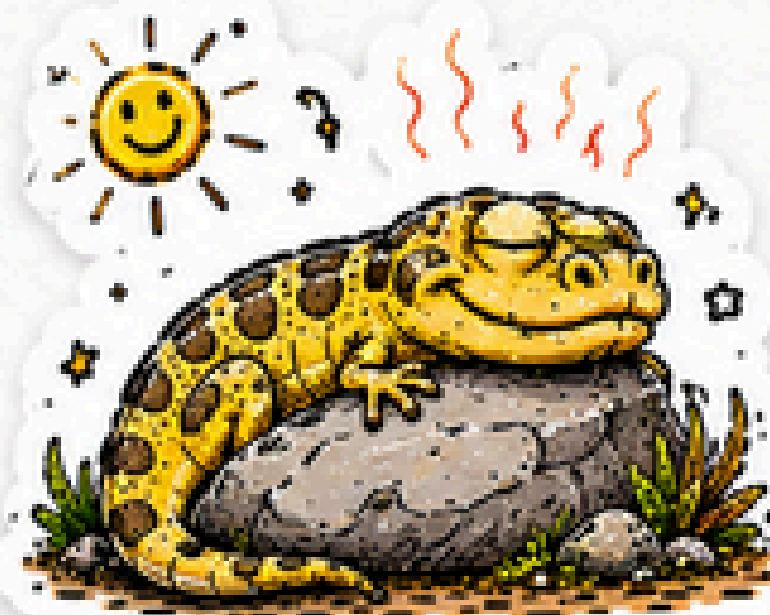
LIZARDS USE THEIR  
**TONGUES** TO CATCH FOOD.



LIZARDS SHED THEIR  
**SKIN** TO GROW.



SOME LIZARDS CAN **DROP**  
THEIR TAILS TO ESCAPE.



LIZARDS **BASK** IN THE SUN  
TO STAY WARM.



LIZARDS  
LIVE IN MANY  
**HABITATS**  
AROUND THE  
**WORLD!**